

**Oak Park Conservancy District  
Stormwater Best Management Practices (BMPs)  
Good Housekeeping Practices (GHPs)**

GHP-01

**Activity: Dewatering Operations**

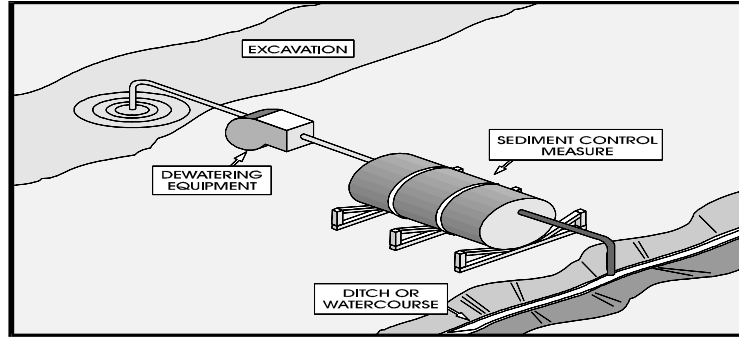
PLANNING CONSIDERATIONS:

Training:  
Low

PE Design Approval:  
Not Required

Maintenance:  
Moderate

Inspection Frequency:  
Weekly  
As needed (due to wet weather)



**Target Pollutants**

Significant ♦

Partial ♦

Low or Unknown ◇

Sediment ♦    Heavy Metals ◇    Nutrients ◇    Oxygen Demanding Substances ◇    Toxic Materials ◇  
Oil & Grease ◇    Bacteria & Viruses ◇    Floatable Materials ◇    Construction Waste ◇

**Description**

Testing of groundwater for pollution accumulation by using sediment controls is the basis of this BMP. This dewatering operation will reduce or prevent discharge of pollutants and aid in a partial reduction in toxic materials.

**Approach**

Sediment and toxic and petroleum products are two general classes of pollutants that may result from dewatering operations. Toxics and petroleum are rarely found in dewatering discharges unless the site or surrounding has been used for light or heavy industrial activities. Sediment, on the other hand, usually has a high content in dewatering discharges due to the commonality of the operation. **This BMP only addresses capture of sediment.** If it is determined that dewatering will result in transferor accumulation of toxics or petroleum products then the Indiana Department of Environmental Management (IDEM) should be consulted before any dewater activities are performed.

**Maintenance and Inspection Checklist**

- Inspect filtering device frequently and repair or replace once the sediment build-up prevents the structure from functioning as designed.
- Sediment removal must be disposed of at a disposal site or spread and stabilized onsite.
- Inspect excavated areas daily for signs of contaminated water (signs such as discolored water, oily sheen or odor).